

6 WAYS TO EARN

1

RETAIL & PREFERRED CUSTOMER PROFIT (PAID WEEKLY)

RETAIL CUSTOMERS: Earn 20-25% Commissions on Retail Customer Purchases
 Ex: V3 Retail \$70 - V3 Wholesale \$55 = \$15 Retail Profit

PREFERRED CUSTOMERS: Earn 20% Commissions on the TOTAL DOLLAR VALUE of ALL Preferred Customer Orders!
 Ex. You have 20 individual PC's ordering 1 bottle of V3 Original @ \$55/month. Receive 20 x (20% x \$55) = \$220 in Monthly Retail Profit

2

FAST START BONUS - \$67.50 TO \$215 (PAID WEEKLY)

25% Commission on Personally Enrolled Consultant's Fast Start Pak = FSV

3

UNI-LEVEL TEAM BONUS (PAID MONTHLY)

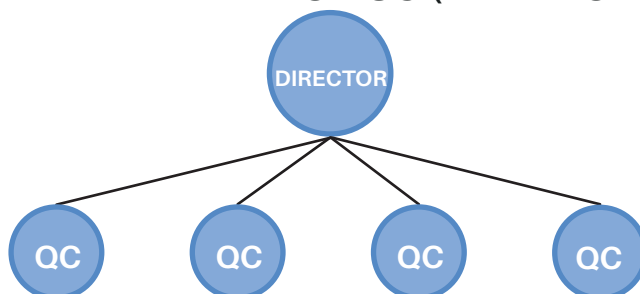
First 50 monthly (UV) of all Group Volume (GV)

	1 STAR	2 STAR	3 STAR	DIRECTOR
PERSONALLY ENROLLED	1 QC	2 QC	3 QC	4 QC
LEVEL 1	15%	15%	15%	15%
LEVEL 2		10%	10%	10%
LEVEL 3			10%	10%
LEVEL 4				5%
LEVEL 5				5%

Compression ↑

4

RAPID RANK BONUS (PAID MONTHLY)



Advance to Director

First 15 Days - \$200
 First 30 Days - \$100

Executive Director - 1 Fast Start Success Pak of your choice or \$430 in VLRP*

Regional Marketing Director - 1 Fast Start Premiere Pak of your choice or \$860 in VLRP*

National Marketing Director - 1 each (any combination) of a Fast Start Success Pak and a Fast Start Premiere Pak or \$2000 in VLRP*

*VLRP is Vfinity Loyalty Rewards Points which can be redeemed for single products.

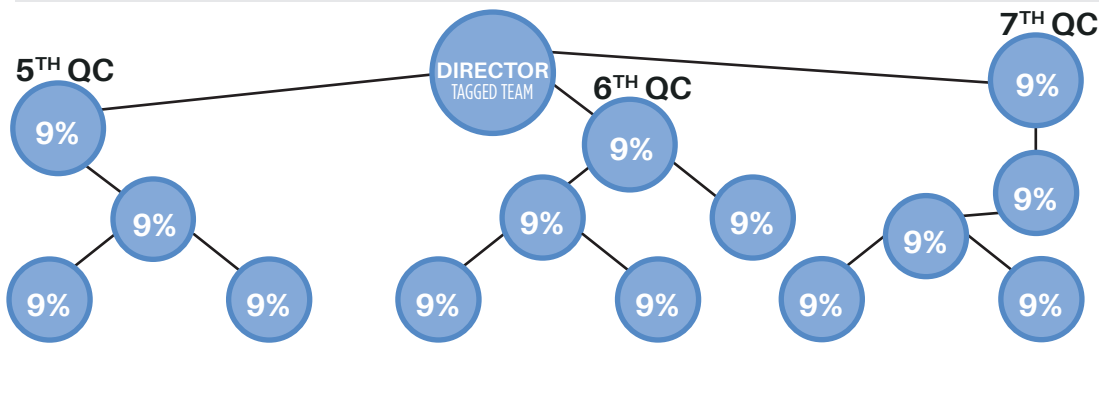
5

TAGGED TEAM BONUS (PAID MONTHLY)

Calculated on FSV

DIRECTOR		EXECUTIVE DIRECTOR		REGIONAL DIRECTOR		NATIONAL DIRECTOR
9%	+	9%	+	4%	+	3%
		(18%)			(22%)	(25%)

Dynamic Compression



UNLIMITED DEPTH*

6

TEAM COMMISSION (PAID MONTHLY)

Allows you to earn on all GV less UV which equals Team Volume (TV).

DIRECTOR		EXECUTIVE DIRECTOR		REGIONAL DIRECTOR		NATIONAL DIRECTOR
10%	+	15%	+	9%	+	6%
		(25%)			(34%)	(40%)



*Please refer to the **Complete Compensation Overview** for the Monthly Qualifications Required