

7 WAYS TO EARN

1

RETAIL & PREFERRED CUSTOMER PROFIT (PAID WEEKLY)

RETAIL CUSTOMERS: Earn 20-25% Commissions on Retail Customer Purchases
 Ex: V3 Retail \$70 - V3 Wholesale \$55 = \$15 Retail Profit

PREFERRED CUSTOMERS: Earn 20% Commissions on the TOTAL DOLLAR VALUE of ALL Preferred Customer Orders!
 Ex. You have 20 individual PC's ordering 1 bottle of V3 Original @ \$55/month. Receive 20 x (20% x \$55) = \$220 in monthly retail profit

2

FAST START BONUS - \$67.50 TO \$215 (PAID WEEKLY)

25% Commission on Personally Enrolled Consultant's Fast Start Pack = FSV

3

UNI-LEVEL TEAM BONUS (PAID MONTHLY)

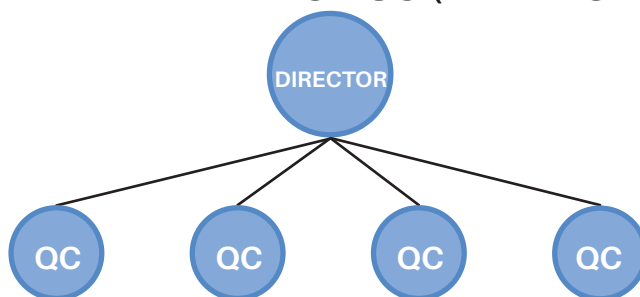
First 50 monthly (UV) of all Group Volume (GV)

| | 1 STAR | 2 STAR | 3 STAR | DIRECTOR |
|---------------------|--------|--------|--------|----------|
| PERSONALLY ENROLLED | 1 QC | 2 QC | 3 QC | 4 QC |
| LEVEL 1 | 15% | 15% | 15% | 15% |
| LEVEL 2 | | 10% | 10% | 10% |
| LEVEL 3 | | | 10% | 10% |
| LEVEL 4 | | | | 5% |
| LEVEL 5 | | | | 5% |

Compression ↑

4

RAPID RANK BONUS (PAID MONTHLY)



Advance to Director to Earn
 First 15 Days - \$200
 First 30 Days - \$100

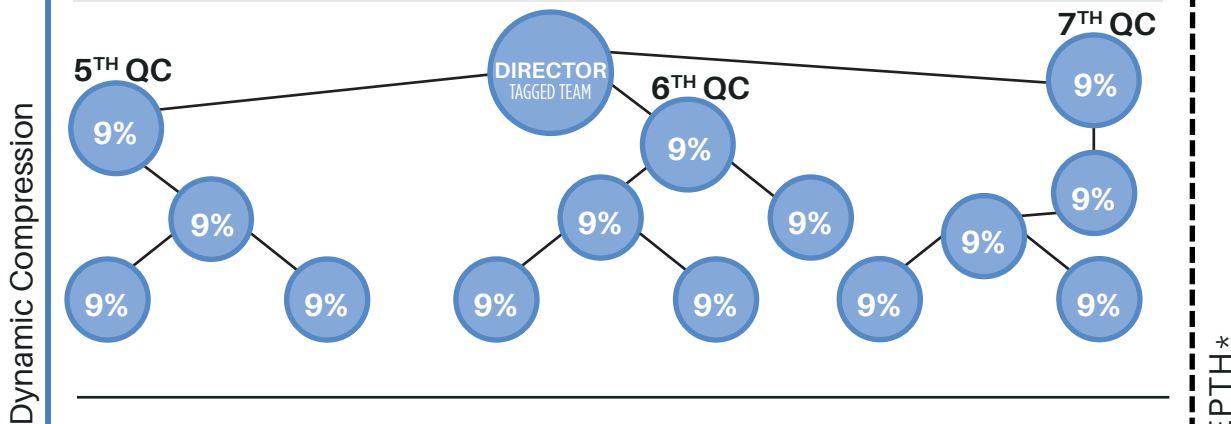
- Executive Director** - Elite Package \$1000 Value
- Regional Director** - Elite Package \$2000 Value
- National Director** - Elite Package \$5000 Value

5

TAGGED TEAM BONUS (PAID MONTHLY)

Calculated on FSV

| DIRECTOR | EXECUTIVE DIRECTOR | REGIONAL DIRECTOR | NATIONAL DIRECTOR |
|----------|--------------------|-------------------|-------------------|
| 9% | 9% (18%) | 4% (22%) | 3% (25%) |



6

TEAM COMMISSION (PAID MONTHLY)

Allows you to earn on all GV less UV which equals Team Volume (TV).

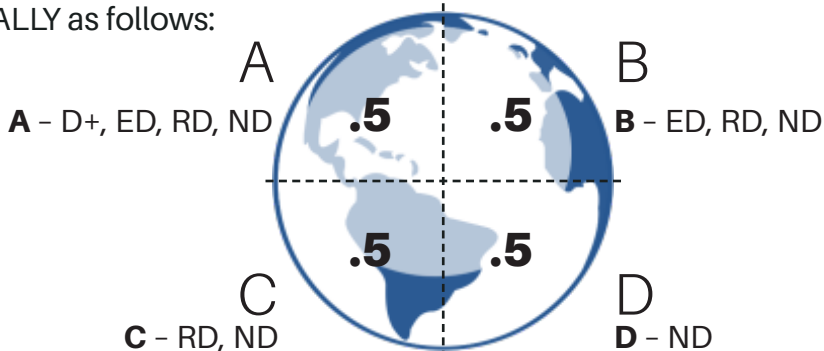
| DIRECTOR | EXECUTIVE DIRECTOR | REGIONAL DIRECTOR | NATIONAL DIRECTOR |
|----------|--------------------|-------------------|-------------------|
| 10% | 15% (25%) | 9% (34%) | 6% (40%) |



7

GLOBAL BONUS POOL

2% of Global Sales will be contributed to this Quarterly Bonus. Pool divided EQUALLY as follows:



*Please refer to the **Complete Compensation Overview** for the Monthly Qualifications Required