

7 WAYS TO EARN

1

RETAIL PROFIT

Ex: V3 Retail \$69.95 - V3 Wholesale 54.95 = \$15 Retail Profit

2

FAST START BONUS - \$67.50 TO \$215

25% Commission on Personally Enrolled Consultant's Fast Start Pack = FSV

3

UNI-LEVEL TEAM BONUS

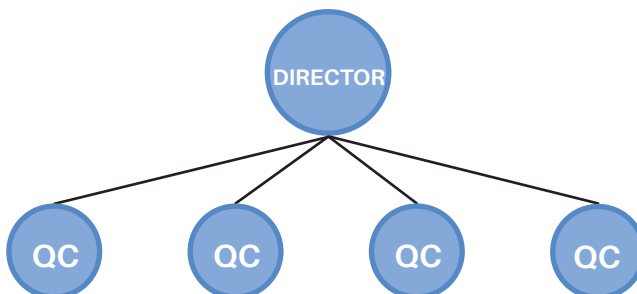
First 50 monthly (UV) of all Group Volume (GV)

	1 STAR	2 STAR	3 STAR	DIRECTOR
PERSONALLY ENROLLED	1 QC	2 QC	3 QC	4 QC
LEVEL 1	15%	15%	15%	15%
LEVEL 2		10%	10%	10%
LEVEL 3			10%	10%
LEVEL 4				5%
LEVEL 5				5%

↑
Dynamic Compression

4

RAPID RANK BONUS



Advance to Director to Earn

First 15 Days - \$200

First 30 Days - \$100

Executive Director - Elite Package
\$1000 Value

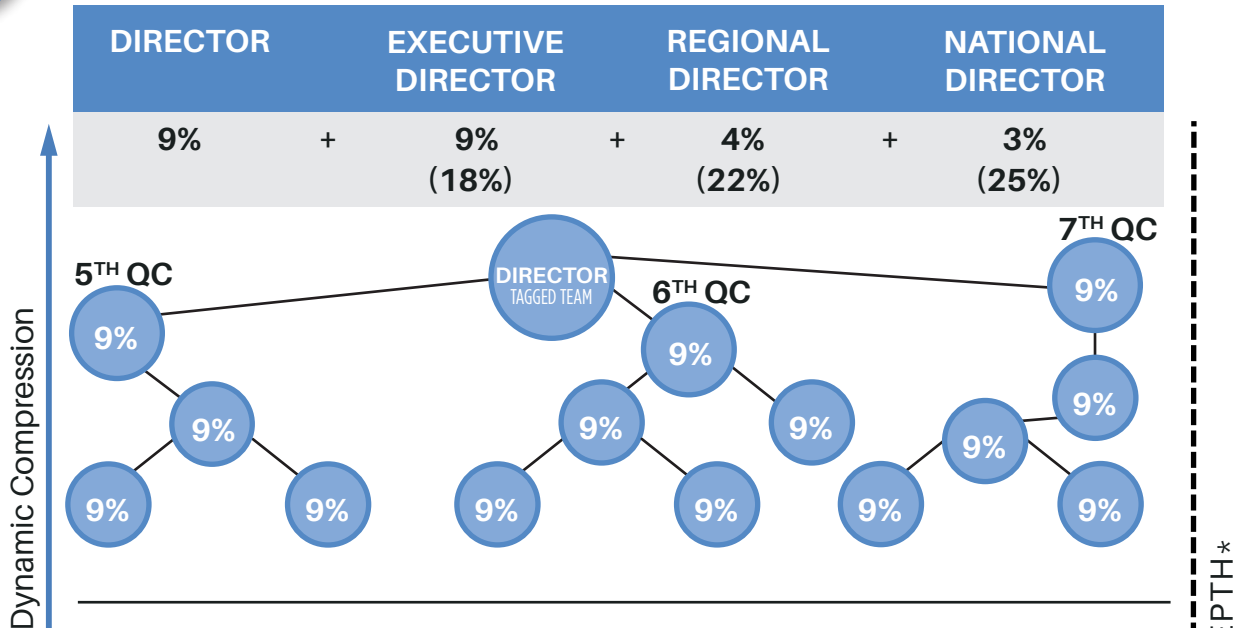
Regional Director - Elite Package
\$2000 Value

National Director - Elite Package
\$5000 Value

5

TAGGED TEAM BONUS

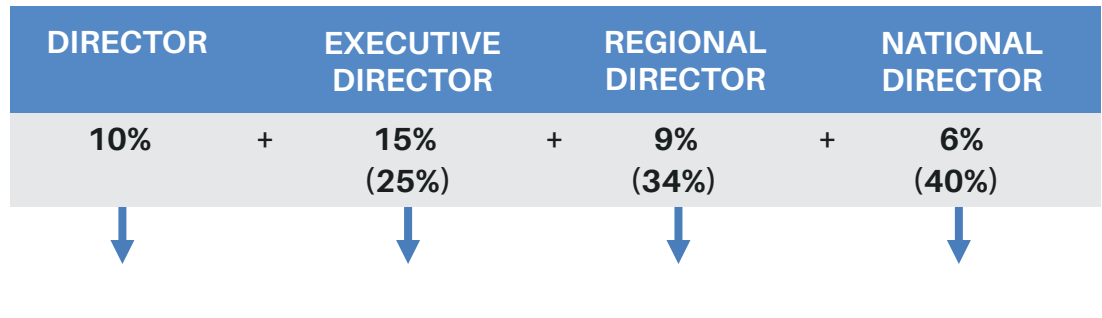
Calculated on FSV



6

TEAM COMMISSION

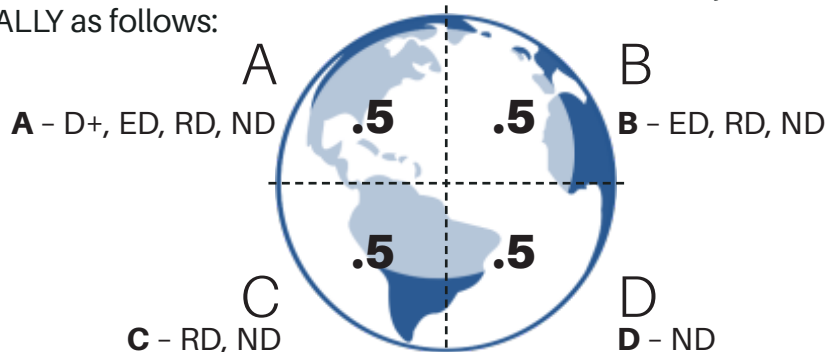
Allows you to earn on all GV less UV which equals Team Volume (TV).



7

GLOBAL BONUS POOL

2% of Global Sales will be contributed to this Quarterly Bonus. Pool divided EQUALLY as follows:



*Please refer to the **Complete Compensation Overview** for the Monthly Qualifications Required